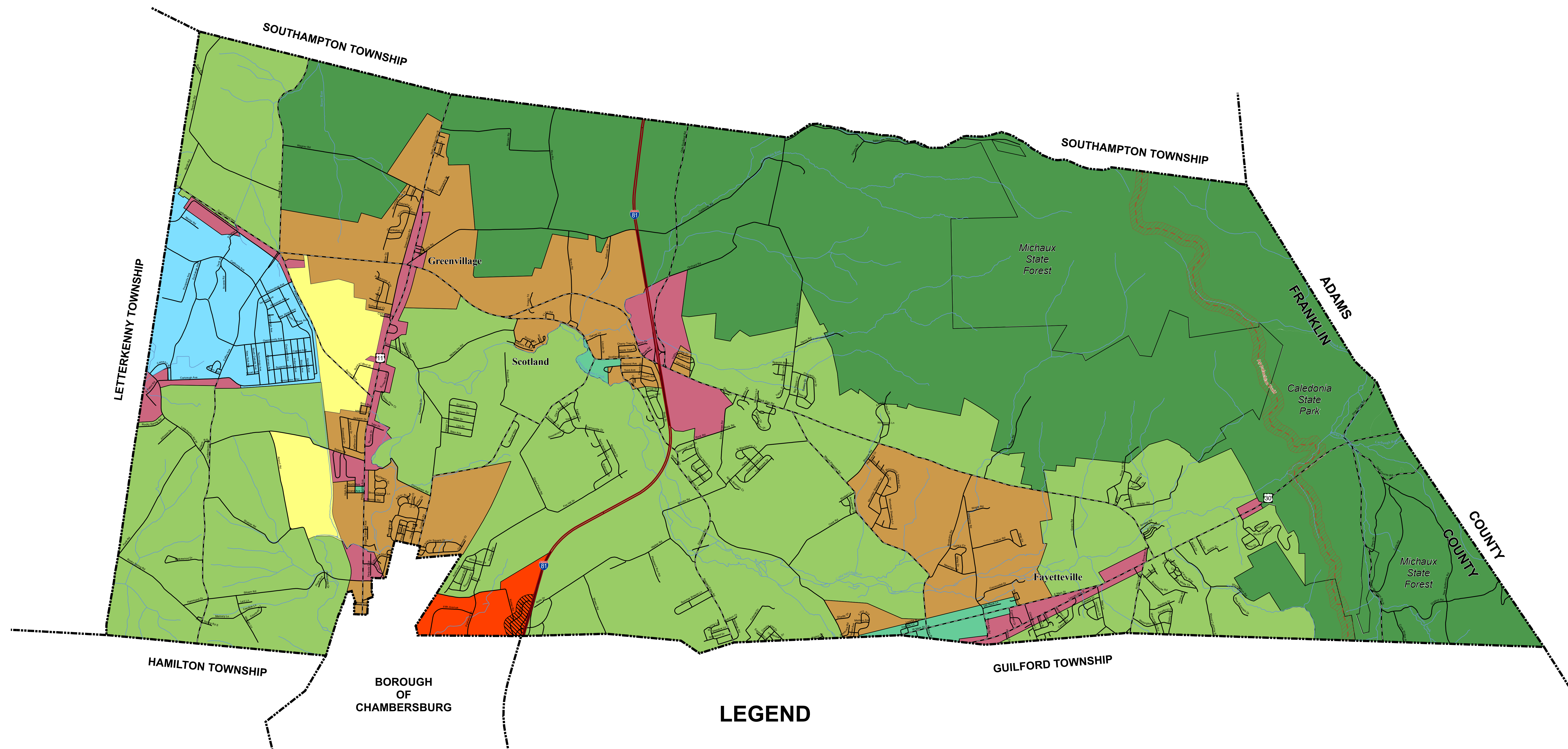


GREENE TOWNSHIP COMPREHENSIVE PLAN

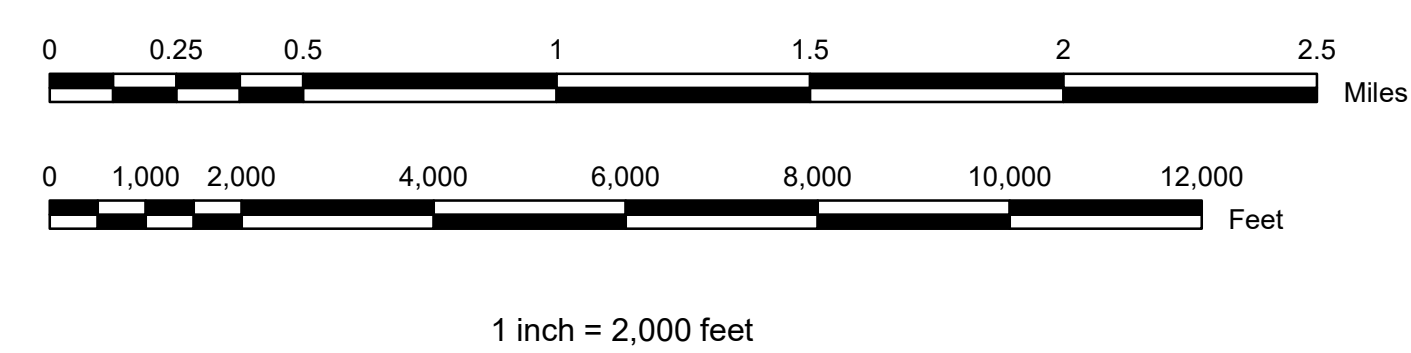
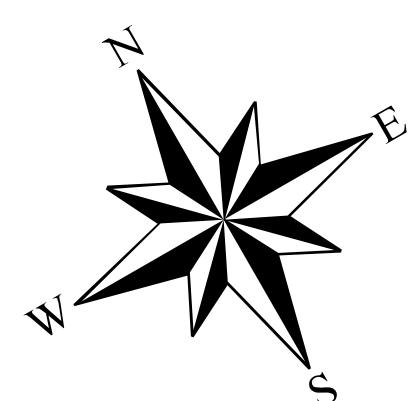
Future Land Use



LEGEND

- Agricultural Residential
- Community Commercial
- Highway Commercial
- Heavy Industrial
- Light Industrial
- Low-Density Residential
- Medium-Density Residential
- Transitional Commercial
- Exit 17 Interchange Overlay

Mapping derived from data provided by Franklin County, Greene Township.



GREENE TOWNSHIP BOARD OF SUPERVISORS

1145 Garver Lane • P.O. Box 215
Scotland, Pennsylvania 17254-0215

Supervisors: 717-263-9160
Zoning: 717-263-4990

E-mail: greene@greentwp.us
Website: www.twp.greene.franklin.pa.us

Future Land Use

PLATE

17

of 18