



GREENE TOWNSHIP MUNICIPAL PARK

Franklin County, Pennsylvania

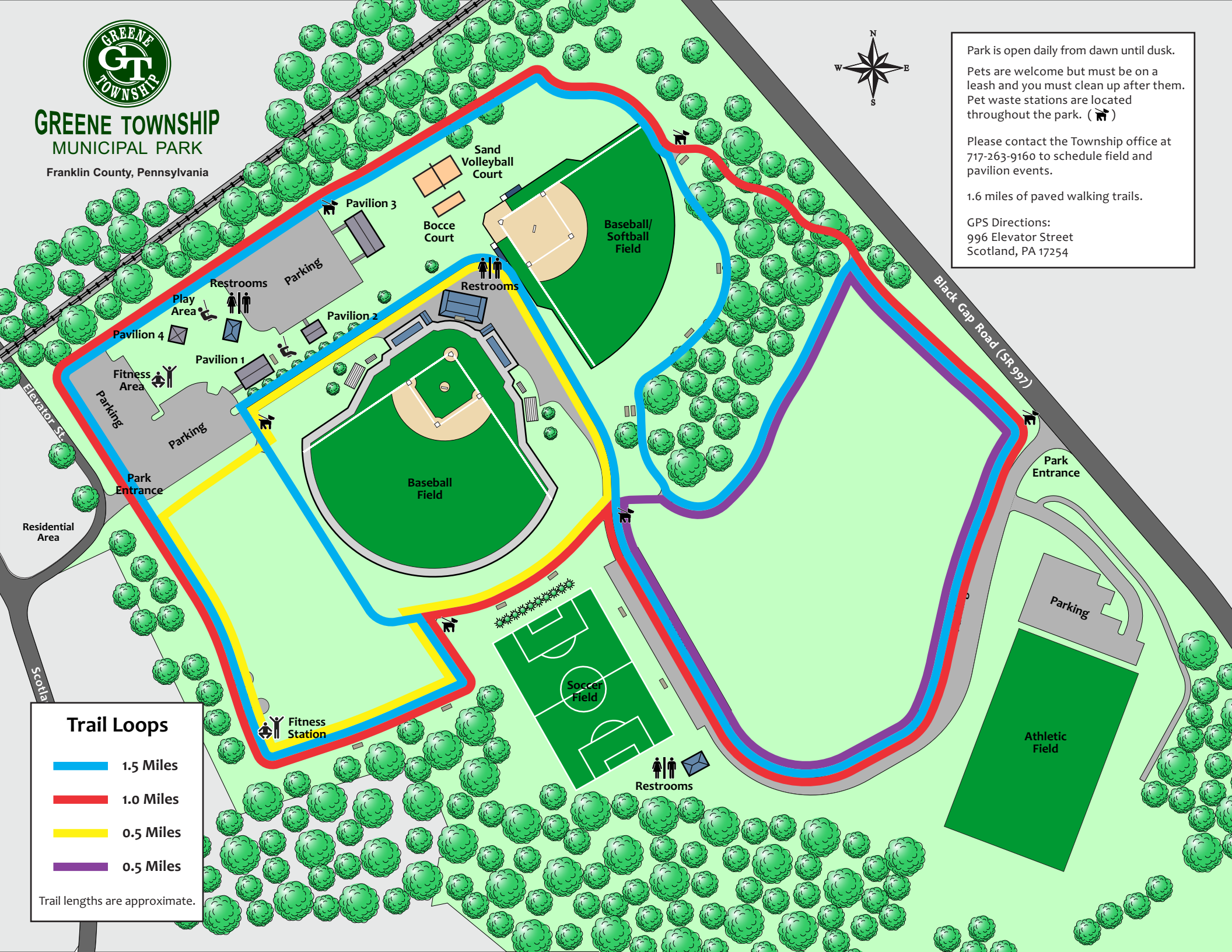


Park is open daily from dawn until dusk.
Pets are welcome but must be on a leash and you must clean up after them. Pet waste stations are located throughout the park. (🐕)

Please contact the Township office at 717-263-9160 to schedule field and pavilion events.

1.6 miles of paved walking trails.

GPS Directions:
996 Elevator Street
Scotland, PA 17254



Trail Loops

- 1.5 Miles
- 1.0 Miles
- 0.5 Miles
- 0.5 Miles

Trail lengths are approximate.