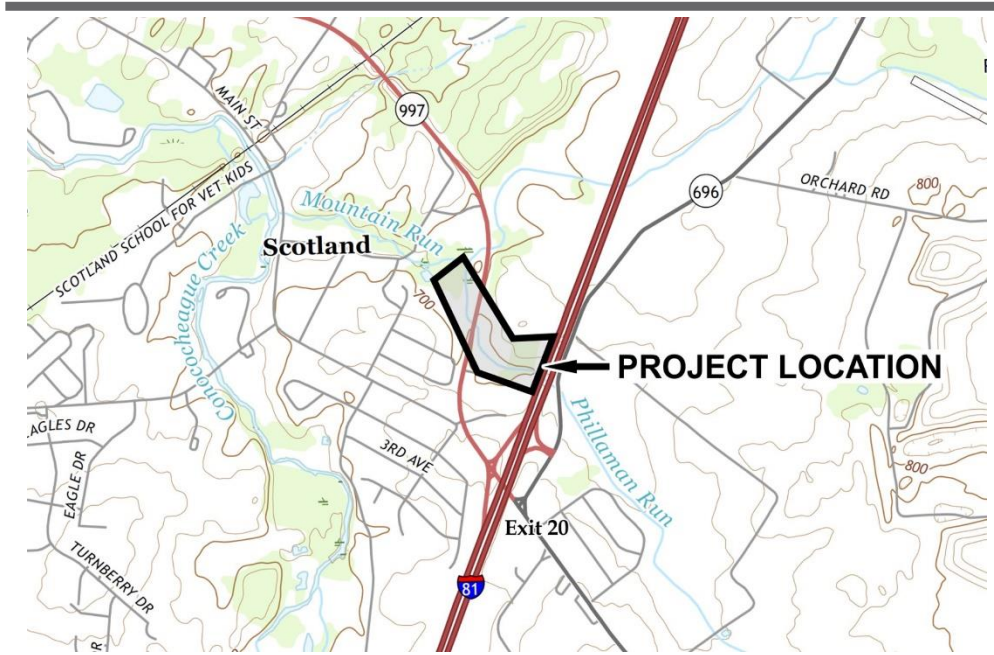


SUCCESS STORY

PHILLAMAN RUN STREAM RESTORATION DESIGN

SUMMARY

Phillaman Run flows through the South Mountain Region and eventually ends at the Conococheague Stream. Over the years the stream bank has eroded away. There are many factors that cause a stream bank to erode. Flooding, development, and time itself are just a few of those factors. The South Mountain Mini Grant will help fund the design of 2,000 linear feet of stream restoration. This design includes surveying, mapping, hydraulic analysis, drainage, landscape plantings and drawings. The design is the first step in restoring Phillaman Run back to its natural beauty.



CHALLENGE

This design provides the ground work needed to restore Phillaman Run. Phillaman Run spans a long distance in Greene Township. We have identified 2,000 linear feet of stream restoration but much more will be needed in the future. This 2,000 feet of stream is a good start.

FUNDING

Grant Award: \$14,300

Total Project Cost: \$61,000

PARTNERSHIP IS KEY

Partners

- South Mountain Partnership
- Landowners
- HRG Engineering
- Greene Township



GREENE TOWNSHIP
BOARD OF SUPERVISORS



pennsylvania
DEPARTMENT OF CONSERVATION
AND NATURAL RESOURCES



SOUTH MOUNTAIN
PARTNERSHIP



SOLUTION

The design process required landowners, business, and municipality to discuss the need for stream restoration. Everyone agreed that stream restoration is needed. We all agreed that it is important to preserve the waterways and protect waterway habitat.

RESULTS

This design allows landowners to stay involved in the project. We have identified where the stream is eroding and what steps we can take to restore the stream. This stream bank design provides information needed to seek additional funding for the construction phase. When the construction phase is completed we will have reduced the amount of pollutants that enter the stream by planting native vegetation. Stabilizing the stream bank is key to protecting our waterway habitat. This design is the start of a much larger future project that will protect our environment.

Contact

Greene Township Board of
Supervisors
Shawn Corwell
1145 Garver Lane
Chambersburg, Pennsylvania 17202
(717) 263-9160

