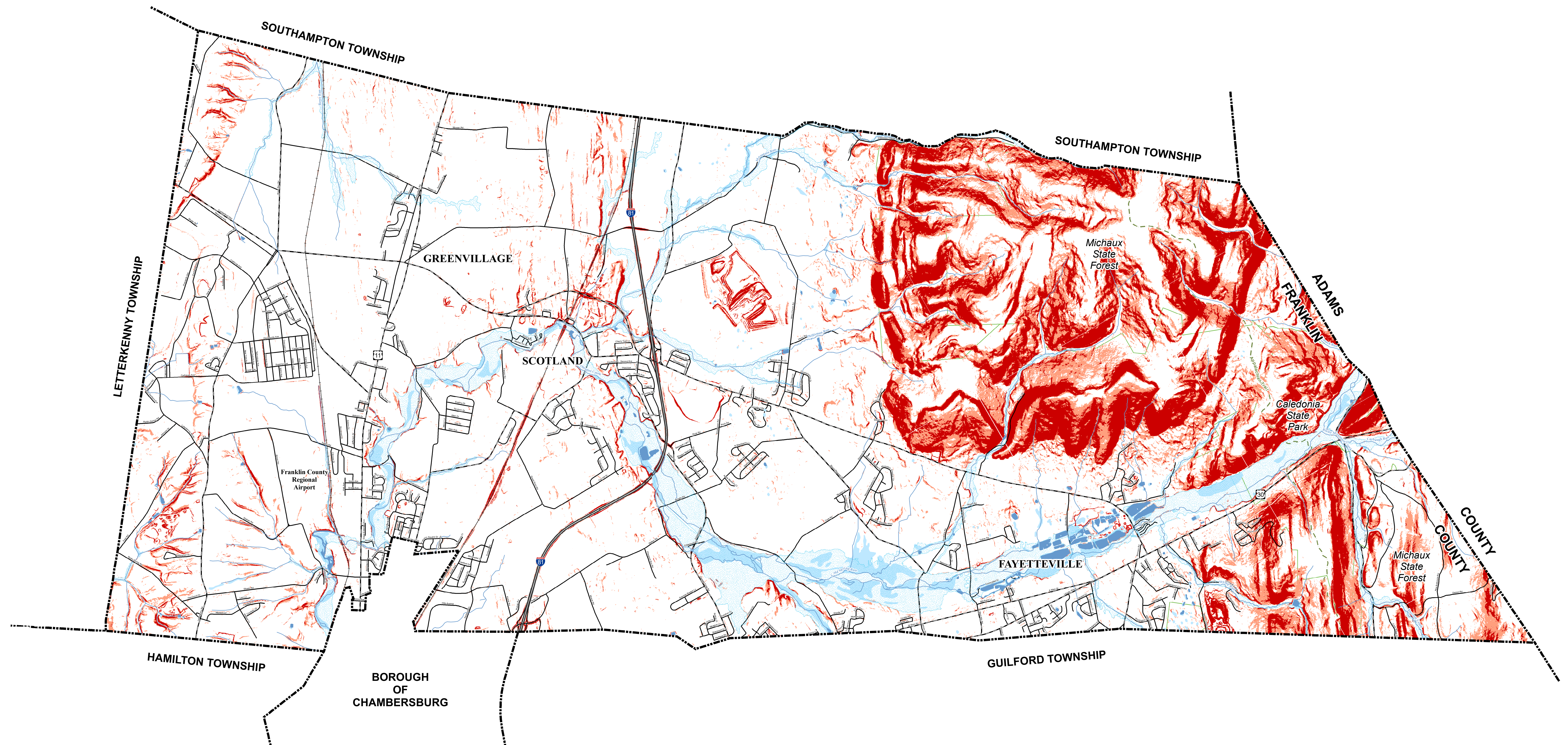
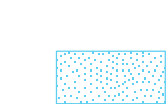







# GREENE TOWNSHIP COMPREHENSIVE PLAN

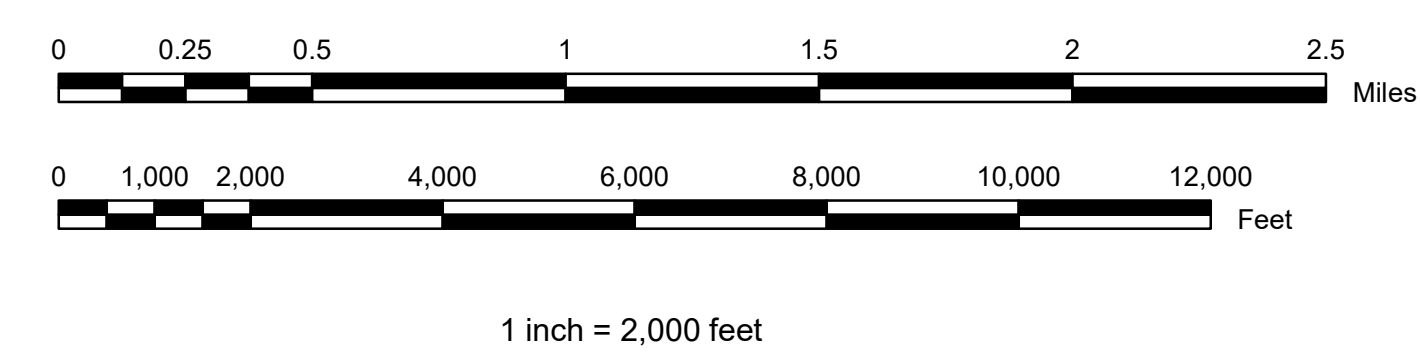
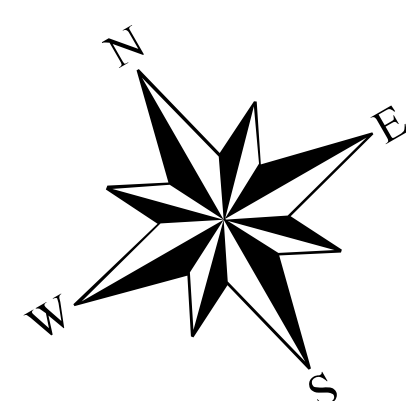
## Floodplains, Wetlands & Steep Slopes



### LEGEND

-  Floodplains
-  Wetlands
-  Creek or Stream
-  Water Body
-  15 - 25% SLOPE
-  > 25% SLOPE

Mapping derived from data provided by Franklin County, Greene Township and the Federal Emergency Management Agency.



### GREENE TOWNSHIP BOARD OF SUPERVISORS

1145 Garver Lane • P.O. Box 215  
Scotland, Pennsylvania 17254-0215

Supervisors: 717-263-9160  
Zoning: 717-263-4990

E-mail: [greene@greentwp.us](mailto:greene@greentwp.us)  
Website: [www.twp.greene.franklin.pa.us](http://www.twp.greene.franklin.pa.us)

### Floodplains, Wetlands & Steep Slopes

PLATE

**4**

of 18